

Contact JDP

Inverness	Ellesmere Port	Ashford
Aberdeen	Manchester	Berkhamsted
Oban	Alfreton	Isle of Wight
Edinburgh	Wednesbury	Carmarthen
Glasgow	Northampton	Hereford
Carlisle	Norwich	Yate
Birtley	Colchester	Avonmouth
Skipton	Cambridge	Dorchester
Knottingley	Portsmouth	Launceston

Sales & Products

☎ 0800 195 1212
✉ sales@jdpipes.co.uk

General Enquiries

☎ 01228 791503
✉ contact@jdpipes.co.uk

Technical Support

☎ 01228 794445
✉ technical.support@jdpipes.co.uk

Online

🌐 www.jdpipes.co.uk
🐦 @jdpipes_co_uk
📘 /JDPipes.co.uk



📍 Locate your local JDP branch at
www.jdpipes.co.uk/branches

With JDP manufacturing partners:



JDP is more than just a merchant. As part of Tessenenderlo Group, a worldwide organisation operating across 21 countries, our manufacturing capabilities, technical knowledge and extensive product knowledge makes us one of the leading experts in your industry.

By continuing to invest in extensive stock levels to ensure local availability of our product range, and combining expertly trained staff, our own specially designed vehicle fleet, a dedicated in-house Technical Support team and a growing nationwide network of branches, JDP is always close to the project and ready to serve.

© JDP

John Davidson (Pipes) Limited, Townfoot, Longtown, Carlisle, Cumbria, CA6 5LY
Tel: 01228 791503 Email: contact@jdpipes.co.uk Web: www.jdpipes.co.uk

Registered in Scotland No. SC050397
1 Exchange Crescent, Conference Square, Edinburgh, EH3 8UL



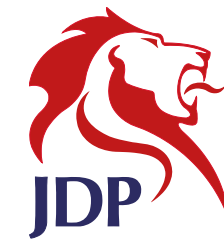
REV1-1705



CONCRETE DRAINAGE

🌐 www.jdpipes.co.uk 🐦 @jdpipes_co_uk 📘 /JDPipes.co.uk





Concrete drainage systems offer robust stormwater and sewer systems with proven strength and durability.

JDP provides a range of innovative concrete drainage products to suit various applications and projects.

Resistant to chemical attacks and massive impacts, such as jetting, concrete drainage combines easy maintenance and excellent physical performance with a long system life.

Materials used to manufacture products are sourced responsibly aiding the sustainability credentials of concrete drainage systems.



Contents

Concrete Drainage Pipe

Spigot & Socket Pipes	1
Rocker Pipes	2
Spigot Butt End Pipes	3
Socket Butt End Pipes	4
Double Spigot Pipes	5
Junctions & Bends	6
Road Gullies	7

Chambers & Cover Slabs

Perfect Base	8
Watertight Manhole Rings	11
Watertight Cover Slabs	11
Concrete Manhole Rings	12
Cover Slabs	13
Soakaway Chambers	14
Headwalls	15
Catchpits	16
Valve Chambers	17
Seating Slabs & Lothian Slabs	18

Contact JDP

- ☎ 0800 195 1212
- ✉ contact@jdpipes.co.uk
- 🌐 www.jdpipes.co.uk
- 🐦 [jdpipes_co_uk](https://twitter.com/jdpipes_co_uk)
- 📘 [jdpipes.co.uk](https://www.facebook.com/jdpipes.co.uk)
- in JDP



SPIGOT & SOCKET PIPES

JDP offers a wide selection of spigot & socket pipes in a range of diameters and lengths to meet any project specifications.

Manufactured to BS EN 1916 & BS 5911-1 and BSI Kitemarked.



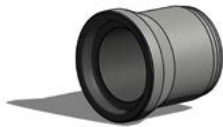
SPIGOT & SOCKET PIPES / DN225 - 2100

Size Internal Dia	mm	225	300	375	450	525	600	675	750	900	1050	1200	1350	1500	1800	2100
Barrel Dia	mm	331	405	485	580	675	780	855	940	1100	1280	1470	1650	1830	2180	2480
Socket Dia	mm	445	540	650	730	805	920	1015	1090	1290	1370	1660	1820	2000	2290	2590
Effective Length	mm	2500	2500	2500	2500	2500	2500	2500	2500	2500	2500	2500	2500	2500	2500	2500
Overall Length	mm	2595	2600	2595	2595	2610	2600	2600	2632	2632	2620	2640	2650	2640	2650	2645
Approx Weight	kg	280	430	580	760	930	1230	1370	1745	2190	2730	3980	4745	5755	7600	9210
To suit Manhole	mm	1050	1200	1350	1350	1500	1500	1500	1800	1800	2400	2400	2400	2400	3000	3600
Maximum Deflection	°	2	2	2	2	2	2	2	1	1	1	1	0.5	0.5	0.5	0.5
Reinforced	-	N	N	N	N	N	N	Y	Y	Y	Y	Y	Y	Y	Y	Y
Lifting Anchor	-	-	-	-	-	-	-	-	-	-	-	2x10T	2x10T	2x10T	2x10T	2x10T
Integrated Joint	-	N	Y	Y	Y	Y	Y	Y	Y	Y	Y	N	N	N	N	N
Lamell Joint	-	Y	Y	Y	Y	Y	Y	Y	Y	Y	Y	Y	Y	Y	Y	Y

Spigot & Socket pipe sizes DN1200 & above are manufactured with 2No lifting anchors for spherical 10T lifting Shackles



ROCKER PIPES / DN225 - 2100



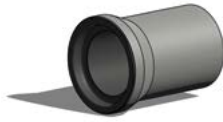
Size Internal Dia	mm	225	300	375	450	525	600	675	750	900	1050	1200	1350	1500	1800	2100
Effective Length	mm	630	620	620	825	820	825	820	1245	1230	1245	1380	1310	1290	1300	1330
Approx Weight	kg	79	120	159	270	332	438	485	913	1133	1421	2290	2614	3117	4158	5137

SPIGOT BUTT END PIPES / DN225 - 2100



Size Internal Dia	mm	225	300	375	450	525	600	675	750	900	1050	1200	1350	1500	1800	2100
Effective Length	mm	1298	1300	1298	1298	1305	1300	1300	1316	1316	1310	1320	1325	1320	1325	1323
Approx Weight	kg	132	202	270	356	435	574	640	815	1023	1274	1857	2216	2688	3549	4302

SOCKET BUTT END PIPES / DN225 - 2100



Size Internal Dia	mm	225	300	375	450	525	600	675	750	900	1050	1200	1350	1500	1800	2100
Effective Length	mm	1298	1300	1298	1298	1305	1300	1300	1316	1316	1310	1320	1325	1320	1325	1323
Approx Weight	kg	151	231	308	406	497	656	730	930	1167	1454	2120	2529	3067	4051	4890

DOUBLE SPIGOT PIPES / DN225 - 900



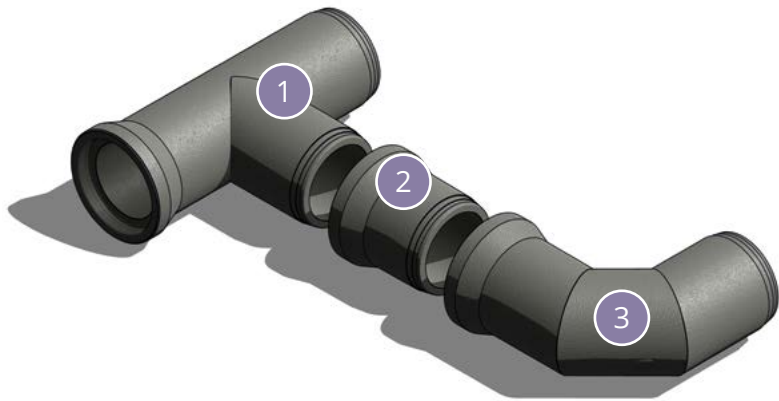
Size Internal Dia	mm	225	300	375	450	525	600	675	750	900	1050	1200	1350	1500	1800	2100
Effective Length	mm	495	570	530	730	835	745	800	1250	1225	-	-	-	-	-	-
Approx Weight	kg	55	80	95	184	283	349	415	757	924	-	-	-	-	-	-



JUNCTIONS / DN225 - 2100

- 1. Tumbling Bay
- 2. Special Length Pipe
- 3. 90 Degree Bend

Only made to order



BENDS / DN225 - 2100

Common Angles

11.25°
22.5°
45°
90°

Only made to order
Other angles available upon request



JUNCTION SEALS

Junction seals to suit 100mm & 150mm pipe connections can be fitted to all sizes of concrete pipe from JDP.

Seals are supplied to suit branches made from solid wall PVCu, structured wall sewer, twinwall surface drainage, Supersleve clay & Densleeve clay.

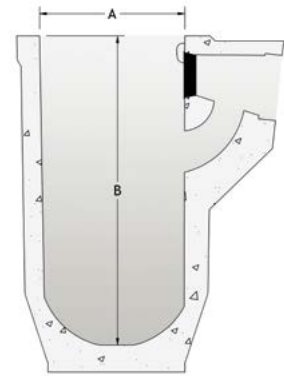
Junction seals can be fitted to full length pipe or rocker pipes in positions to suit site requirements.

Junctions to suit other pipe sizes and types are available upon request.



Road gullies are manufactured to BS 5911-6 and are BSI Kitemarked. Gullies can be supplied with adaptors for connection to clay and plastic pipes.

ROAD GULLIES / 375 & 450mm



Type	Size (A)	Depth (B)	Approx Weight	Outlet
-	mm	mm	kg	mm
Untrapped	375	750	180	150
Trapped	375	750	200	150
Trapped	450	750	250	150
Untrapped	450	750	250	150
Trapped	450	900	285	150



ADVANTAGES

- Seal cast in to prevent onsite damage
- Rodding eye closure resessed into concrete
- Lightweight design for lower carbon footprint
- Eliminates discharge of oil
- Universal - suits all drainage products
- Gully grating and cover available



PERFECT BASE

The Perfect Base is a custom-made watertight monolithic benched concrete base.

It allows JDP to provide any practical channel inlet/outlet configuration. Inlets are possible at every angle from 90° to 270° from outlet.

The extra flexibility of the Perfect Base therefore allows for bespoke base design.

All Perfect Bases are individual, custom-made to exact site requirements.

JDP's manufacturing partners allow for swift manufacture & delivery to site just days after order.



EVERY ANGLE

Each Perfect Base can be manufactured with limitless channel configurations

SAFER INSTALLATION

Reduced working time in confined spaces

WATERTIGHT SYSTEM

The combination of a thicker wall and rubber joint ensures a watertight structure

EFFICIENCY

Installation times significantly shorter than traditional methods

DESIGN LIFE

120 years

QUALITY

Complies with BS EN 1917 and BS 5911-3
Accepted by major water companies and is included in Sewers for Adoption

CUSTOM CONNECTIONS

Manufactured with integrated couplers to suit any pipe type

ACCESS

Available with or without double steps or ladder rungs

SIMPLE INSTALLATION

Certified lifting shackles can be provided for safe and easy installation

LOW CARBON FOOTPRINT

40-45% more environmentally friendly than traditional methods

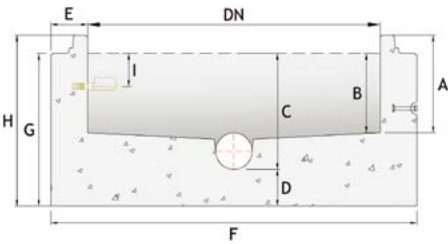
TAKE-OFF SERVICE

Bases manufactured to CAD site drawings

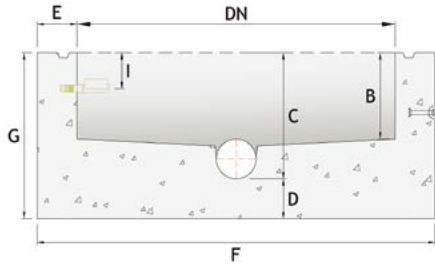
CUSTOM DESIGN

Available with custom inlet/outlet & crown/invert configuration

WATERTIGHT JOINT



TONGUE & GROOVE JOINT



Note: Sealant strip is required for Tongue & Groove installation

PERFECT BASE / DN1200

Inlet/Outlet Diameter	A	B	C	D	E	F	G	H	I	Approx Weight
mm	mm	mm	mm	mm	mm	mm	mm	mm	mm	kg
100	400	325	475	150	150	1500	625	700	125	1710
100	300	225	375	150	150	1500	525	600	125	1550
100	200	125	275	150	150	1500	425	500	125	1400
100	100	25	175	150	150	1500	325	400	125	1250
150	400	325	475	150	150	1500	625	700	125	1710
150	300	225	375	150	150	1500	525	600	125	1550
150	200	125	275	150	150	1500	425	500	125	1400
150	100	25	175	150	150	1500	325	400	125	1250
225	400	325	575	150	150	1500	725	800	125	2020
225	300	225	475	150	150	1500	625	700	125	1870
225	200	125	375	150	150	1500	525	600	125	1710
300	400	325	625	150	150	1500	775	850	125	2150
300	300	225	525	150	150	1500	675	750	125	2000

Dimensions may vary depending on type of pipe used.

PERFECT BASE / DN1500

Inlet/Outlet Diameter	A	B	C	D	E	F	G	H	I	Approx Weight
mm	mm	mm	mm	mm	mm	mm	mm	mm	mm	kg
375	500	415	815	200	230	1960	1015	1100	175	5000
375	400	315	715	200	230	1960	915	1000	175	4700
375	300	215	615	200	230	1960	815	900	175	4400
450	500	415	915	200	230	1960	1115	1200	175	5390
450	400	315	815	200	230	1960	1015	1100	175	5090
450	300	215	715	200	230	1960	915	1000	175	4790
450	200	115	615	200	230	1960	815	900	175	4490
525	500	415	915	200	230	1960	1115	1200	175	5390
525	400	315	815	200	230	1960	1015	1100	175	5090
525	300	215	715	200	230	1960	915	1000	175	4790
600	500	415	915	200	230	1960	1115	1200	175	5390
600	400	315	815	200	230	1960	1015	1100	175	5090

Dimensions may vary depending on type of pipe used.





PERFECT BASE / DN1800

Inlet/Outlet Diameter	B	C	D	E	F	G	I	Approx Weight
mm	mm	mm	mm	mm	mm	mm	mm	kg
675	900	1400	200	300	2400	1600	125	10180
675	800	1300	200	300	2400	1500	125	9700
675	700	1200	200	300	2400	1400	125	9230
675	600	1100	200	300	2400	1300	125	8750
750	900	1400	200	300	2400	1600	125	9970
750	800	1300	200	300	2400	1500	125	9490
750	700	1200	200	300	2400	1400	125	9020
750	600	1100	200	300	2400	1300	125	8540
900	900	1400	200	300	2400	1600	125	9780
900	800	1300	200	300	2400	1500	125	9310
900	700	1200	200	300	2400	1400	125	8830

Dimensions may vary depending on type of pipe used. Note: DN1800 Base only available as tongue & groove joint.

JDP provides watertight manhole rings to suit the BSI Kitemarked Perfect Base System.

Using a rubber seal and spigot and socket joint, the wide wall manhole rings achieve water tightness without the need of a concrete surround as per BS EN 1917. All watertight manhole rings are manufactured with spherical lifting eyes cast in. Cover slabs are designed with a 3 point lifting system for a perfectly balanced lift, 3 certified lifting loops are cast into each slab for safe lifting.

WATERTIGHT MANHOLE RINGS / DN1200 & 1500

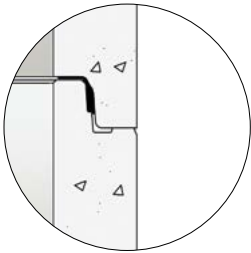
Internal Dia	Available Depth of Section				Wall Thickness	Overall Dia	Circum	Approx Weight/m	Type of Joint	Lifting Shackle
mm	mm	mm	mm	mm	mm	mm	mm	kg	-	-
1200	250	500	750	1000	130	1460	4712	1350	Watertight	3 x 2.5T
1500	300	600	900	1200	150	1800	5655	1925	Watertight	3 x 2.5T

WATERTIGHT MANHOLE COVER SLABS / DN1200 & 1500

To Suit Internal Dia	Overall Dia	Effective Depth	Approx Weight	Standard Access Sizes					
mm	mm	mm	kg	600 SQ	675 SQ	600 RD	675 RD	750 x 600	1200 x 675
1200	1490	270	820	•	•	•	•	•	-
1500	1900	260	1205	•	•	•	•	•	•

ADVANTAGES

- Fast & safe installation
- No concrete surround required
- More cost effective than traditional methods
- Complete watertight chamber
- Lifting anchors for simple handling
- More environmentally friendly
- 0.5 bar pressure joint
- Seal meets or exceeds requirements of EN 1917 regarding load transfer



JDP provides a wide range of concrete manhole rings in accordance with BS EN 1917, BS 5911-3 & BS 5911-4. Manhole rings are BSI Kitemarked.

MANHOLE RINGS / DN900 - 4000

Internal Dia	Available Depth of Section				Wall Thickness	Overall Dia	Circum	Approx Weight/M	Type of Joint	Lifting Hole	Step Heights
mm	0.25m	0.5m	0.75m	1.0m	mm	mm	mm	kg	-	-	-
900	(0.3m)	(0.6m)	(0.9m)	-	70	1040	3050	520	Rebate	3 x 40mm	300mm
1050	•	•	•	•	85	1220	3550	700	Rebate	3 x 40mm	250mm
1200	•	•	•	•	100	1400	4050	1050	T&G	3 x 40mm	250mm
1350	•	•	•	•	100	1550	4550	1100	Rebate	3 x 40mm	250mm
1500	-	•	•	•	115	1730	5030	1300	T&G	3 x 40mm	250mm
1800	-	•	•	•	125	2050	6050	1800	T&G	4 x 50mm	250mm
2100	-	•	•	•	140	2380	7050	2400	T&G	4 x 50mm	250mm
2400	-	•	•	•	150	2700	8050	2900	T&G	4 x 50mm	250mm
2700	-	•	•	•	150	3000	9050	3300	T&G	4 x 50mm	250mm
3000	-	•	•	•	180	3360	10000	4500	T&G	4 x 50mm	250mm
3600	-	•	•	•	200	4000	11950	6000	T&G	4 x 50mm	250mm
4000	-	•	•	•	200	4400	13200	6600	T&G	3 x RD24	250mm

DN3600 & DN4000 are outside the scope of the British Standard Non-Kitemark but comply with all relevant provisions of the European Standard
DN4000 manhole ring is manufactured in two halves



OPTIONS AVAILABLE

- Pre-fitted double steps/ladder steps
- Sealant strip in various sizes
- Base cast in option
- Cored holes in various sizes

JDP provides a wide range of cover slabs in accordance with BS EN 1917 & BS 5911-3. DN3600 & 4000 cover slabs are generally designed in accordance with BS EN 1992-1-1.

COVER SLABS / DN900 - 4000

To Suit Internal Dia	Overall Dia	Effective Depth	Approx Weight	Standard Access Sizes						
mm	mm	mm	kg	600 SQ	600 RD	675 SQ	675 RD	750 SQ	1200 x 675	750 x 600
900	1275	150	310	•	•	•	•	-	-	-
1050	1280	160	335	•	•	•	•	•	-	-
1200	1465	160	495	•	•	•	•	•	-	•
1350	1630	160	650	•	•	•	•	•	•	•
1500	1765	160	800	•	•	•	•	•	•	•
1800	2050	200	1425	•	-	•	-	•	•	•
2100	2375	200	1990	•	-	•	-	•	•	•
2400	2780	225	3160	•	-	•	-	•	•	•
2700	3005	225	3735	•	-	•	-	•	•	•
3000	3400	300	6470	•	-	•	-	•	•	•
3600	4000	300	9085	•	-	•	-	•	•	•
4000	4500	300	11590	•	-	•	-	•	•	•

DN4000 slabs are manufactured in 2 pieces
Standard DN900 - 1800 slabs are manufactured round
Larger and Bespoke Slabs DN2100 - 4000 are manufactured hexagonal



OPTIONS AVAILABLE

- Special slabs & opening sizes on request
- Full drawing designs and calculations provided
- Reducing slabs and landing slabs available
- Davitt sockets available on request



Soakaways are a key component for stormwater management systems. Soakaways provide a simple way of dealing with storm water locally by encouraging ground water recharge, whilst reducing the impact on the existing stormwater network.

JDP concrete soakaway chambers are available in depths of 500mm, 750mm and 1000mm, each containing with the correct amount of Ø75mm holes to provide a minimum area of permeation of 50,000mm² per metre of nominal diameter per metre of height, complying to BS EN 1917:2002 and BS 5911-3.

SOAKAWAY CHAMBERS / DN900 - 4000



Size DN	Available Depth of Section				Ø75mm Holes/m
	mm	0.5m	0.75m	1.0m	
900	-	-	(0.6)	(0.9mm)	9
1050	•	•	•	•	11
1200	•	•	•	•	13
1350	•	•	•	•	14
1500	•	•	•	•	16
1800	•	•	•	•	19
2100	•	•	•	•	22
2400	•	•	•	•	25
2700	•	•	•	•	28
3000	•	•	•	•	31
3600	•	•	•	•	38
4000	•	•	•	•	42

Headwall chambers that are fitted with a device to regulate the flow of stormwater in a drainage system prevents downstream flooding during periods of heavy rainfall. JDP provides complete custom designed flow control chambers to suit most stormwater management systems.

HEADWALLS / DN150 - 2100

Sizes	Standard Openings	Wall Thickness	Approx Weight	Lifting Loop Sizes
-	mm	mm	kg	-
Small	150 - 450	100 & 150	1500	4 x RD 24
Medium	450 - 675	150	2460	4 x RD 24
Large	600 - 1050	150	3460	4 x RD 24
X Large (2 Pieces)	1050 - 1350	250	6000 (1 Piece)	4 x RD 30
XX Large (2 Pieces)	1500 - 2100	250	7750 (1 Piece)	4 x RD 30

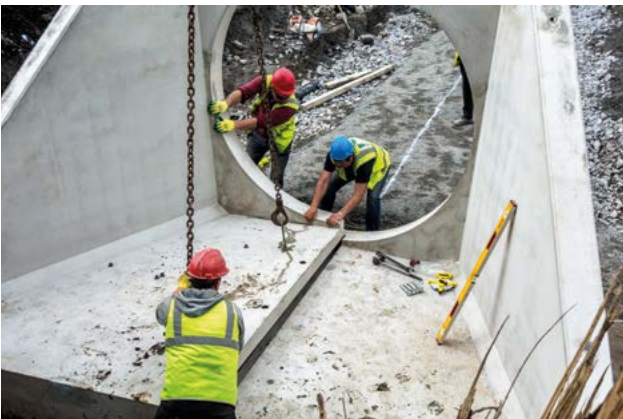
Weight of headwall may vary depending on opening size

OPTIONS AVAILABLE

- Hand railings, gratings & flap valves
- Special toe pieces as per Sewers For Adoption
- Bespoke headwalls manufactured on request
- Multiple pipe diameters & openings on request
- Box culvert headwalls
- Full drawing designs and calculations provided

ADVANTAGES

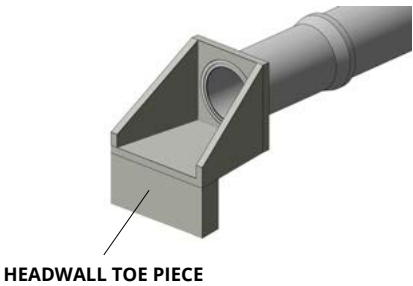
- Simple & fast installation
- 120 year design life
- No onsite shuttering required
- Complete off-site solution



Toe pieces for headwalls to suit different ground conditions can be supplied where required. Bespoke toe pieces are made on request.

TOE PIECE SIZES AVAILABLE

- 250mm
- 500mm
- 750mm
- 1000mm



A catchpit is an empty chamber with an inlet and outlet pipe set at a level above the floor of the pit. Any sediment carried by the system settles within the catchpit, from where it can be periodically pumped out or removed.

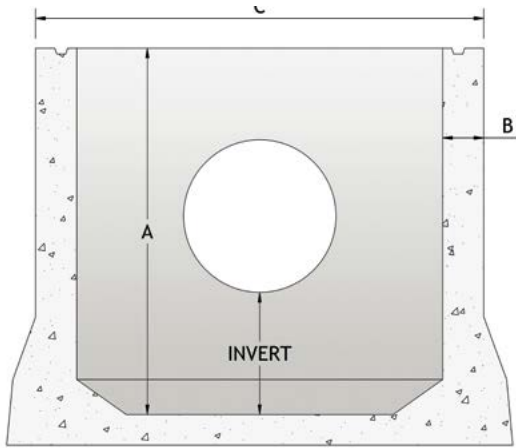
CATCHPITS / DN1050 - 1200

Internal Dia	Depth	Wall Thickness	Overall Dia	Circum	Approx Weight	Type of Joint	Lifting Shackle
mm	mm	mm	mm	mm	kg	-	-
1050	865	115	1280	4021	1585	Rebate	3 x RD 24
1200	1200	135	1470	4618	2400	T&G	3 x RD 24

Bespoke catchpits can be made up to sizes of DN3600mm

ADVANTAGES

- Complete watertight chamber
- Off-site solution
- Simple & fast installation
- Can be fitted with any type of pipe
- Reduced time in confined spaces
- Low carbon footprint



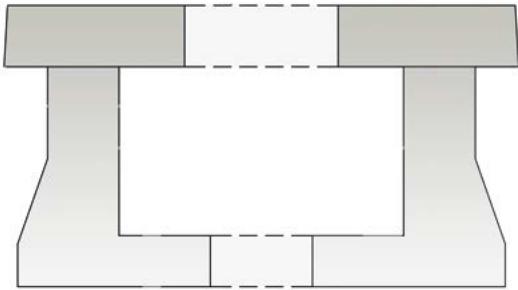
Valve chambers are a bespoke precast sealed manhole designed to mount a pump for water, chemicals or fuel. JDP valve chambers are manufactured to suit any type of valve or pump and allow quick and secure access.

VALVE CHAMBERS / DN1050 - 1200

Internal Dia	Depth	Wall Thickness	Overall Dia	Circum	Approx Weight/m	Type of Joint	Lifting Shackle
mm	mm	mm	mm	mm	kg	-	-
1050	865	115	1280	4021	1585	Rebate	RD 24
1200	1200	135	1470	4618	2400	T&G	RD 24

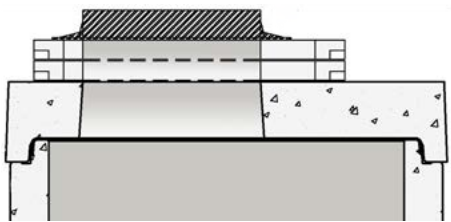
ADVANTAGES

- Accomodates connection to any pipe type concrete, ductile iron, HDPE & clay
- Pump raised off ground via bespoke shelf
- Off-site solution
- Simple & fast installation
- Clean & easy access for inspection
- Immediate watertight structure



Seating slabs are designed to be fitted on top of the cover slabs and gullies. By fitting seating slabs the steel cover can quickly be brought up to the cover level needed without the need for time to be spent on brickwork. Seating slabs are manufactured to requirements of BS EN 1917 & BS 5911-3.

SEATING SLABS



Opening	Depth	Approx Weight	Dimensions
mm	mm	kg	mm
600 Square	65	105	1045 x 975
600 Round	65	115	1045 x 975
675 Square	65	90	1045 x 975
675 Round	65	105	1045 x 975
1200 x 675	65	135	1557 x 1050
750 x 600	65	86	1050 x 975
*Lothian Slab - 675 Square	150	292	1155 x 1155

ADVANTAGES

- Designed to replace engineering bricks
- Simple & fast installation
- Compressive strength equal to Class B engineering brick
- More cost effective than brickwork



ACCESSORIES

As well as steps and ladder steps manufactured to BS EN 13101, JDP also provides a range of jointing strips, tools and accessories at trade counters across the UK.



COMPLETE SYSTEMS

JDP stocks twinwall, PVC, clay and adoptable sewer pipework in-depth, and provides everything you need for your project from your local JDP branch.



TECHNICAL SUPPORT

JDP's in-house design team can provide free on-site take offs with a 24 hour turnaround, and can assist with full drainage system designs and legislative guidance.

JDP offers you MORE

